

A*STAR WIFI Setup Guide

Thursday, 6 July 2023 8:21 am

3.0 STEP BY STEP CONFIGURATION


To connect using the secure wireless network, "ASTAR-Guest", follow the instructions on your device:

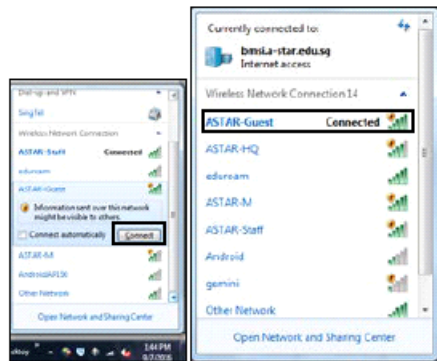
Definition of configuration settings

Network name (SSID)

The network name for the wireless network is ASTAR-Guest.

3.1 Step by step settings for the wireless configuration

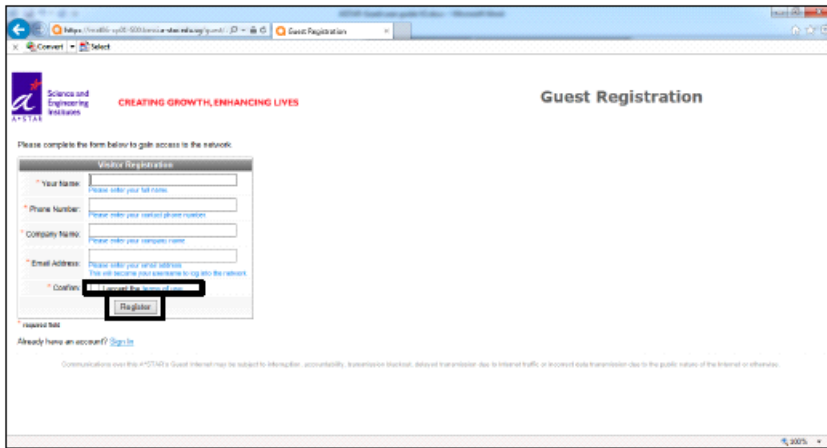
- a. Go to Right Bottom of the screen -> Click Wireless icon () to select "ASTAR-Guest".
- b. Select "Connect".



- d. Go to any Internet Browser such as Chrome, I.E and Mozilla. Once browser is open it will automatically redirect to the page below; Click "Create Account".



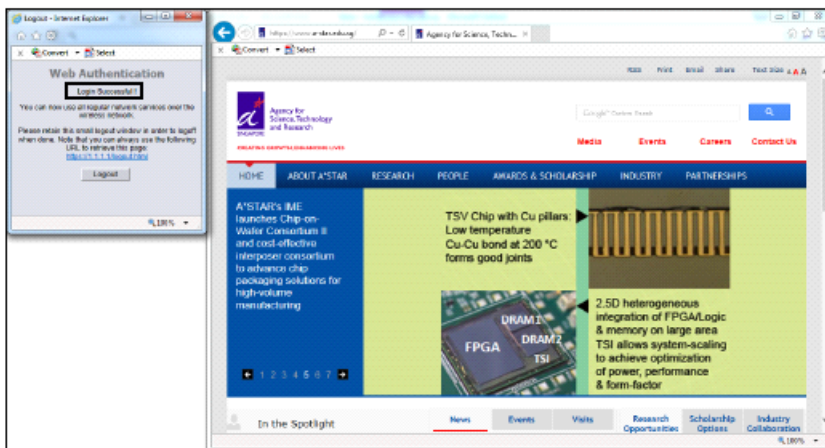
- e. Enter all required credential in all the fields and tick "I accept the term use box" then click "Register".



f. Click "Log In". For repeat login, please tick "I accept the term use box" and Click "Log In".

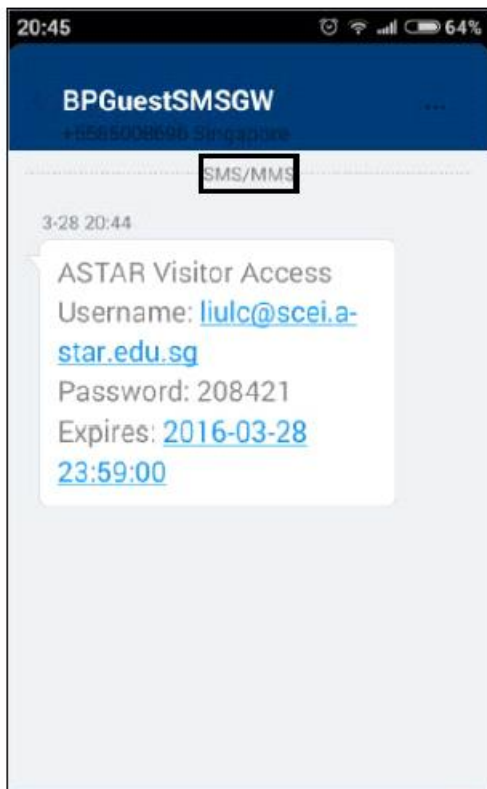
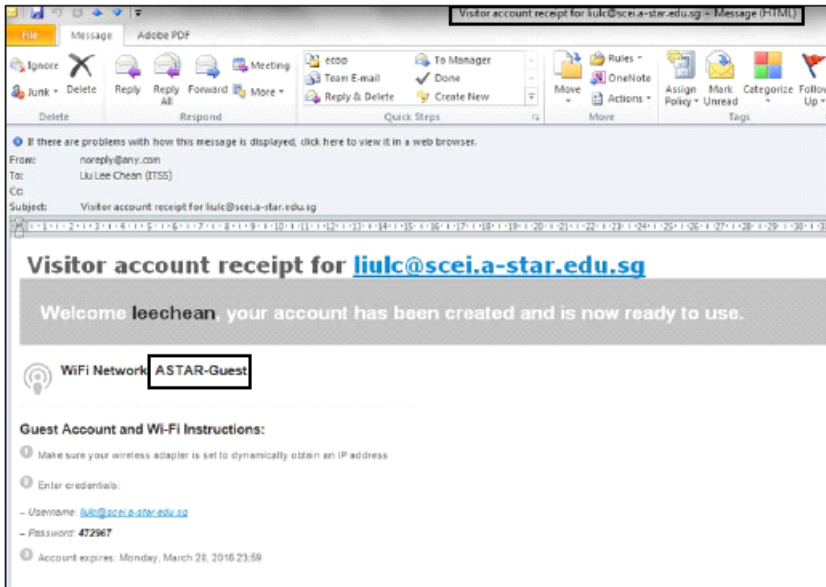


g. You are now connected to "ASTAR-Guest" wireless network.



h. E-mail and SMS will be sent to the registered credential which includes the following details;

- Username
- Password
- Account Expiry



A*STAR IT Service Desk (non-SOE)
Email: servicedesk_itss@hq.a-star.edu.sg ;
Tel: +6565177979
Support Hours: Mon to Fri, 8:30am to 6:00pm